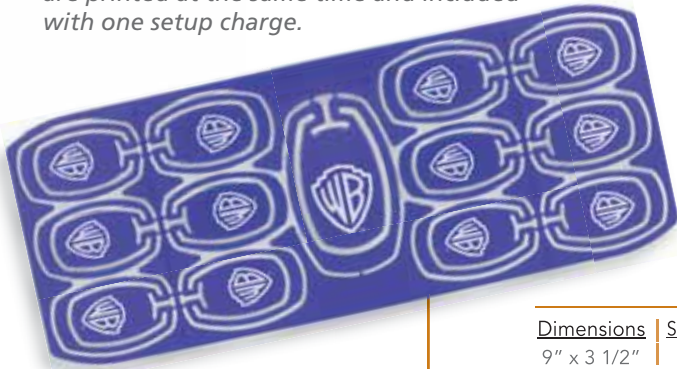


# Office Products

The Paper Clip Sprue holds 12 small and 1 large paperclips. Just twist them off to use. It fits nicely in a #10 envelope and is perfect for direct mail promotions. All clips are printed at the same time and included with one setup charge.



These products are made with specially formulated plastic which is 100% biodegradable in any type of landfill. No composting required. Complete biodegradation should occur between 6 months to 2 years.

## Paper Clip Sprue Mailer 5054

Dimensions	Small Clips Imp. Area	Large Clips Imp. Area	Weight	Packaging
9" x 3 1/2"	1/2" x 7/8"	5/8" x 1 3/8"	7 lbs. (100 pcs.)	Bulk

Production Time	100	250	500	1,000	2,500+ (C)
5 Days	1.05	.90	.80	.75	.70
<b>3 Day Express</b>	<b>1.85</b>	<b>1.40</b>	<b>1.20</b>	<b>1.05</b>	<b>N/A</b>
Each Additional Color	.35	.30	.25	.25	.25 (G)

One side imprint only. For polybagging add .12 (G) each.

Please specify ITEM# and color: ■ Trans Red 5054TR | ■ Trans Blue 5054TV |   White 5054W | ■ Pink 5054PK

Fits in #10 envelope.



## "Style Station" Multi-Pen/Sticky Note Holder 5032

Dimensions	Imprint Area	Weight	Packaging
4 1/4" x 1 1/2" x 4 1/2"	3/4" x 2 1/4"	18 lbs. (100 pcs.)	Polybag

Production Time	100	250	500	1,000	2,500+ (C)
5 Days	1.70	1.50	1.45	1.40	1.35
<b>3 Day Express</b>	<b>2.50</b>	<b>2.00</b>	<b>1.85</b>	<b>1.70</b>	<b>N/A</b>
Each Additional Color	.35	.30	.25	.25	.25 (G)

Please specify ITEM# and color: ■ Trans Red 5032TR | ■ Trans Blue 5032TV



## 5000 "StyleWrite" Sticky Note/Pen Holder (Patent D486,524)

Dimensions	Imprint Area	Weight	Packaging
3 3/4" x 5"	1/2" x 1 3/4"	10 lbs. (100 pcs.)	Polybag

Production Time	100	250	500	1,000	2,500+ (C)
5 Days	2.00	1.75	1.65	1.60	1.55
<b>3 Day Express</b>	<b>2.80</b>	<b>2.25</b>	<b>2.05</b>	<b>1.90</b>	<b>N/A</b>
Each Additional Color	.35	.30	.25	.25	.25 (G)

\*Polybagged with sticky notepad. Pen not included.

Please specify ITEM# and color: ■ Trans Red 5000TR | ■ Trans Blue 5000TV



Pen not included.

25 Sheet Sticky Note Pad included

## SETUP CHARGES & GENERAL INFORMATION

Setup Charge: 48.00 (G) per color. Price includes: one color imprint, one location. PMS Color Charge: 32.00 (G). Fax/Email Proof Charge: 12.50 (G), add 2 days to production time. Repeat Screen Charge: 20.00 (G).

# Magnet Clips



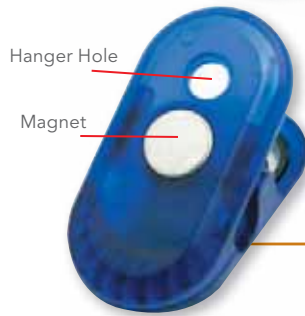
The Duplex Clip features a second clip located on top of the first. Four Color Process imprint is available.

## The Duplex Clip (Patent Pending) 5039

Dimensions	Imprint Area	Weight	Packaging
1 5/8" x 3 1/8" x 1 7/8"	7/8" x 2"	3 lbs. (100 pcs.)	Polybag

Production Time	100	250	500	1,000	2,500+ (C)
5 Days	1.75	1.50	1.40	1.35	1.30
<b>3 Day Express</b>	<b>2.55</b>	<b>2.00</b>	<b>1.90</b>	<b>1.65</b>	<b>N/A</b>
Each Additional Color	.35	.30	.25	.25	.25 (G)
4 Color Process Imprint	.09	.09	.09	.09	.09 (G)
<b>Overseas 8-10 Weeks</b>		<b>5,000</b>	<b>10,000</b>	<b>25,000</b>	<b>50,000+ (C)</b>
<b>5039OP</b>		1.00	.90	.85	.80

Please specify ITEM# and color: ■ Trans Red 5039TR | ■ Trans Blue 5039TV | □ White 5039W



Holds up to 35 sheets of paper and won't slide down a metal surface. The back side has two attachment methods: a hanger hole ideal for nails or tacks and a high powered magnet for metal surfaces. Available with a 4 Color Process imprint.



## 5034 Croc Clip

Dimensions	Imprint Area	Weight	Packaging
3 1/2" x 1 3/4" x 1 1/4"	1 1/4" x 3/8"	10 lbs. (100 pcs.)	Polybag

Production Time	100	250	500	1,000	2,500+ (C)
5 Days	1.50	1.25	1.15	1.10	1.05
<b>3 Day Express</b>	<b>2.30</b>	<b>1.75</b>	<b>1.55</b>	<b>1.40</b>	<b>N/A</b>
Each Additional Color	.35	.30	.25	.25	.25 (G)
4 Color Process Imprint	.09	.09	.09	.09	.09 (G)
<b>Overseas 8-10 Weeks</b>		<b>5,000</b>	<b>10,000</b>	<b>25,000</b>	<b>50,000+ (C)</b>
<b>5034OP</b>		.79	.69	.65	.59

Optional 4 Color Process Imprint Area: 1 1/2" x 1/2".

Please specify ITEM# and color:

■ Trans Red 5034TR | ■ Trans Blue 5034TV | ■ Trans Green 5034TG | □ White 5034W

## SETUP CHARGES & GENERAL INFORMATION

Setup Charge: 48.00 (G) per color. Price includes: one pad print color, one location. 4 Color Process Setup Charge: 50.00 (G), plus run charge shown in price table. Exact color match on 4 Color Process is not guaranteed, please send a color print for color matching purposes. PMS Color Charge: 32.00 (G). Fax/Email Proof Charge: 12.50 (G), add 2 days to production time. Repeat Setup Charge: 20.00 (G). 4 Color Process Repeat Setup Charge: 25.00 (G).

# PhotoImage® Rulers & Coasters



## 5001 Acrylic PhotoImage® Coaster

Dimensions	Imprint Area	Weight	Packaging
4" x 4" x 4"	3 1/2" x 3 1/2"	14 lbs. (100 pcs.)	Polybag

Production Time	100	250	500	1,000	2,500+ (C)
7-10 Days	1.75	1.50	1.40	1.35	1.30
2nd Side Imprint	.40	.30	.25	.25	.25 (G)

4 Color Process imprint included in price.



These products are made with specially formulated plastic which is 100% biodegradable in any type of landfill. No composting required. Complete biodegradation should occur between 6 months to 2 years.



## 12" PhotoImage® Ruler AR1

Dimensions	Imprint Area	Weight	Packaging
12 7/16 x 2"	11 1/2" x 1 1/8"	22 lbs. (100 pcs.)	Polybag

Production Time	100	250	500	1,000	2,500+ (C)
7-10 Days	2.35	2.10	2.00	1.95	1.90
2nd Side Imprint	.40	.30	.25	.25	.25 (G)

**Acrylic PhotoImage® Rulers:**  
Thicker and heavier than other clear plastic rulers. Beautiful beveled design on all sides. Ad copy is protected inside clear acrylic lens cover. Beautiful 4 Color Process imprint included in price.



## AR6 6" PhotoImage® Ruler

Dimensions	Imprint Area	Weight	Packaging
7" x 2 1/4"	6" x 1 3/8"	15 lbs. (100 pcs.)	Polybag

Production Time	100	250	500	1,000	2,500+ (C)
7-10 Days	1.65	1.40	1.35	1.30	1.25
2nd Side Imprint	.40	.30	.25	.25	.25 (G)

### SETUP CHARGES & GENERAL INFORMATION

Setup Charge: 48.00 (G). Price Includes: a custom, one-sided insert, with any number of colors or a 4 Color Process imprint. Exact color match on 4 Color Process is not guaranteed, please send a color print for color matching purposes. 2nd Side Imprint Setup Charge: 40.00 (G). Fax/Email Proof Charge: 12.50 (G), add 2 days to production time. Repeat Setup Charge: 20.00 (G).

# Letter Openers



Magnifying Lens



Cellophane Cutter Blade



*This letter opener also has a small blade which cuts cellophane wrapping on CD, DVD, and other consumer products packaging. It also features a magnifying lens.*

## Letter/CD Slitter (Patent D539,318) **5055**

Dimensions	Imprint Area		Weight		Packaging
2 1/2" x 1 1/4"	1" x 3/4"		3 lbs. (100 pcs.)		Polybag
<b>Production Time</b>	<b>100</b>	<b>250</b>	<b>500</b>	<b>1,000</b>	<b>2,500+ (C)</b>
5 Days	1.15	1.05	.95	.85	.79
<b>3 Day Express</b>	<b>1.95</b>	<b>1.55</b>	<b>1.35</b>	<b>1.15</b>	<b>N/A</b>
Each Additional Color	.35	.30	.25	.25	.25 (G)
<b>Overseas 8-10 Weeks</b>	<b>5,000</b>		<b>10,000</b>	<b>25,000</b>	<b>50,000+ (C)</b>
<b>5055OP</b>	.65	.59	.55	.49	

Please specify ITEM# and color:

Trans Red  
5055TR

Trans Blue  
5055TV

## **9003** Letter Opener Calculator (Patent Pending)

Dimensions	Imprint Area		Weight		Packaging
3 1/2" x 2 1/2"	2 3/4" x 1/2"		3 lbs. (100 pcs.)		Polybag
<b>Production Time</b>	<b>100</b>	<b>250</b>	<b>500</b>	<b>1,000</b>	<b>2,500+ (C)</b>
5 Days	2.85	2.69	2.55	2.35	2.25
<b>3 Day Express</b>	<b>3.65</b>	<b>3.20</b>	<b>2.95</b>	<b>2.65</b>	<b>N/A</b>
Each Additional Color	.35	.30	.25	.25	.25 (G)
<b>Overseas 8-10 Weeks</b>	<b>5,000</b>		<b>10,000</b>	<b>25,000</b>	<b>50,000+ (C)</b>
<b>9003OP</b>	1.75	1.65	1.55	1.49	

Please specify ITEM# and color:

Trans Blue  
9003TV

Silver  
9003S

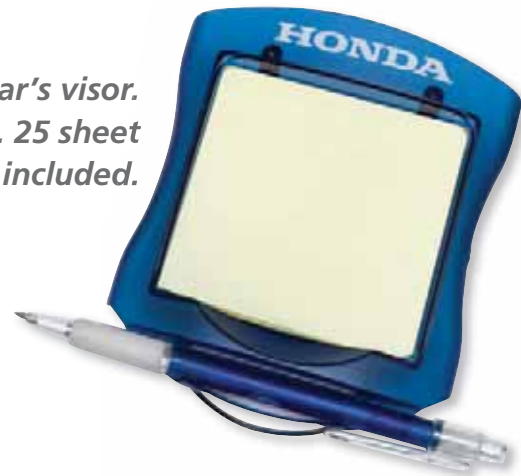


### SETUP CHARGES & GENERAL INFORMATION

Setup Charge: 48.00 (G) per color. Price includes: one color imprint, one location. PMS Color Charge: 32.00 (G). Fax/Email Proof Charge: 12.50 (G), add 2 days to production time. Repeat Setup Charge: 20.00 (G).

# Office Products

The Visor Notes Clips securely to your car's visor. It holds a pen and pad of sticky notes. 25 sheet sticky notepad included in price. Pen not included.



## 5038 Visor Notes (Patent D499,373)

Dimensions	Imprint Area	Weight	Packaging
4" x 5" x 1 3/4"	2 3/4" x 3/8"	17 lbs. (100 pcs.)	Polybag w/Sticky Notepad

Production Time	100	250	500	1,000	2,500+ (C)
5 Days	1.69	1.59	1.49	1.39	1.29
<b>3 Day Express</b>	<b>2.50</b>	<b>2.10</b>	<b>1.90</b>	<b>1.70</b>	<b>N/A</b>
Each Additional Color	.35	.30	.25	.25	.25 (G)
Overseas 8-10 Weeks		5,000	10,000	25,000	50,000+ (C)
5038OP	.99	.89	.79	.75	

Please specify ITEM# and color:

 Trans Blue  
5038TR

 Trans Blue  
5038TV



Pen not included.

## Retractable Correction Tape 3310

Dimensions	Imprint Area	Weight	Packaging
4 1/2" x 1"	1" x 1/4"	5 lbs. (100 pcs.)	Polybag

Production Time	100	250	500	1,000	2,500+ (C)
5 Days	1.45	1.30	1.20	1.15	1.10
<b>3 Day Express</b>	<b>2.25</b>	<b>1.80</b>	<b>1.60</b>	<b>1.45</b>	<b>N/A</b>
Each Additional Color	.35	.30	.25	.25	.25 (G)
Overseas 8-10 Weeks		5,000	10,000	25,000	50,000+ (C)
3310OP	.83	.78	.73	.68	

Please specify ITEM# and color:

 Red  
3310R

 Blue  
3310V

 Black  
3310B



## CD/DVD Cleaner & Package Sitter (Patent Pending)

5051

Dimensions	Imprint Area	Weight	Packaging
4 1/4" x 1/14"	2" x 3/4"	12 lbs. (100 pcs.)	Polybag

Production Time	100	250	500	1,000	2,500+ (C)
5 Days	1.25	1.09	.99	.89	.85
<b>3 Day Express</b>	<b>2.05</b>	<b>1.60</b>	<b>1.40</b>	<b>1.20</b>	<b>N/A</b>
Each Additional Color	.35	.30	.25	.25	.25 (G)
Overseas 8-10 Weeks		5,000	10,000	25,000	50,000+ (C)
5051OP	.65	.59	.55	.49	

Please specify ITEM# and color:

 Trans Blue  
5051TR

 Trans Blue  
5051TV



Snap a CD or DVD into the center hole and spin around to clean the surface. Inside the back end is a hidden blade for slitting and opening cellophane packaging on CD's and DVD's



### SETUP CHARGES & GENERAL INFORMATION

Setup Charge: 48.00(G) per color. Price includes: one color imprint, one location. PMS Color: 32.00(G). Fax/Email Proof Charge: 12.50(G), add 2 days to production time. Repeat Setup Charge: 20.00 (G).